

BALDOR® • **RELIANCE**

Product Information Packet

L3401

.17HP,1140RPM,1PH,60HZ,48,3418L,TEFC,F1

| Part Detail | | | | | | | |
|-------------|------|----------------|-------|-------------|----------|---------------|------------|
| Revision: | U | Status: | PRD/A | Change #: | | Proprietary: | No |
| Type: | AC | Prod. Type: | 3418L | Elec. Spec: | 34WG5612 | CD Diagram: | CD0001 |
| Enclosure: | TEFC | Mfg Plant: | | Mech. Spec: | 34C051 | Layout: | 34LYC051 |
| Frame: | 48 | Mounting: | F1 | Poles: | 06 | Created Date: | |
| Base: | RG | Rotation: | R | Insulation: | B | Eff. Date: | 07-21-2015 |
| Leads: | 6#18 | | | | | Replaced By: | |
| Literature: | | Elec. Diagram: | | | | | |

| | | | | | | | |
|--------------------------|--------------|----------------|------|-----|---|-------|---|
| Nameplate NP1256L | | | | | | | |
| CAT.NO. | L3401 | | | | | | |
| SPEC. | 34C51-5612 | | | | | | |
| HP | .17 | | | | | | |
| VOLTS | 115/230 | | | | | | |
| AMP | 4.6/2.3 | | | | | | |
| RPM | 1140 | | | | | | |
| FRAME | 48 | HZ | 60 | PH | 1 | | |
| SER.F. | 1.35 | CODE | P | DES | N | CLASS | B |
| NEMA-NOM-EFF | 47 | PF | 52 | | | | |
| RATING | 40C AMB-CONT | | | | | | |
| CC | | USABLE AT 208V | 2.6 | | | | |
| DE | 6203 | ODE | 6203 | | | | |
| ENCL | TEFC | SN | | | | | |
| | SFA 5/2.5 | | | | | | |

| Parts List | | |
|---------------|--|----------|
| Part Number | Description | Quantity |
| SA008582 | SA 34C51-5612 | 1.000 EA |
| RA005029 | RA 34C51-5612 | 1.000 EA |
| NS2512A01 | INSULATOR, CONDUIT BOX X | 1.000 EA |
| 34CB3002A | CB CAST W/.88 DIA HOLE | 1.000 EA |
| 34GS1029A01 | GASKET, CONDUIT BOX | 1.000 EA |
| 51XB1016A07 | 10-16 X 7/16 HXWSSLD SERTYB | 2.000 EA |
| 11XW1032G06 | 10-32 X .38, TAPTITE II, HEX WSHR SLTD U | 1.000 EA |
| 51XW0832A07 | 8-32 X .44, TAPTITE II, HEX WSHR SLTD SE | 2.000 EA |
| 34EP3102A01SP | FR ENDPLATE, MACH | 1.000 EA |
| NS2500A01 | INSULATOR, AUTO THER PROT | 1.000 EA |
| WD1000A03 | 41531 AMP FLG.TERM,4M/REEL(2.5MIL) | 1.000 EA |
| 34CB4800SP | CAPACITOR COVER, STAMPED | 1.000 EA |
| 51XB1016A05 | 10-16X5/16HX WA SL SR TYB (F/S) | 2.000 EA |
| HW5100A03SP | WAVY WASHER (W1543-017) | 1.000 EA |
| 34EP3102A02SP | FR/PU ENDPLATE, MACH | 1.000 EA |
| XY1032A02 | 10-32 HEX NUT DIRECTIONAL SERRATION | 4.000 EA |
| 34FN3002A01SP | EXTERNAL FAN, PLASTIC, .637/.639 HUB W/ | 1.000 EA |
| 34FH4002A01SP | IEC FH NO GREASER | 1.000 EA |
| 51XW1032A06 | 10-32 X .38, TAPTITE II, HEX WSHR SLTD S | 3.000 EA |
| 34CB4517 | CB LID 4 MTG HOLES .22 DIA STAMPED, FOR | 1.000 EA |
| 34GS1031A01 | GASKET, FLAT CONDUIT BOX LID (LEXIDE) | 1.000 EA |
| 51XW0832A07 | 8-32 X .44, TAPTITE II, HEX WSHR SLTD SE | 4.000 EA |
| MG1000G27 | MED CHARCOAL METALLIC GREY | 0.014 GA |
| 10XF0440S02 | 04-40 X 1/8 TYPE F HEX HD STAINLESS STIC | 2.000 EA |

| Parts List (continued) | | |
|-------------------------------|--|-----------------|
| Part Number | Description | Quantity |
| SP5051B16 | MDL 34 TORQ STAT SW,TYPE L , STD F1 & F2 | 1.000 EA |
| EC1130A02SP | ELEC CAP, 130-156 MFD, 125V, 1.48D X 3.3 | 1.000 EA |
| 34GS3000SP | GASKET, CAPACITOR BOX | 1.000 EA |
| HA3100A12 | THRUBOLT 10-32 X 7.375 | 4.000 EA |
| LC0001A01 | CONN LABEL / WARNING LABEL (LC0001 / LB1 | 1.000 EA |
| NP1256L | ALUM UL CSA CC | 1.000 EA |
| 34PA1002 | PKG GRP, PRINT PK1001A01 | 1.000 EA |

| Accessories | | |
|--------------------|--------------------|-------------------|
| Part Number | Description | Multiplier |
| 34-3900T | C-FACE KIT | A8 |

AC Induction Motor Performance Data
Record # 6801 - Typical performance - not guaranteed values

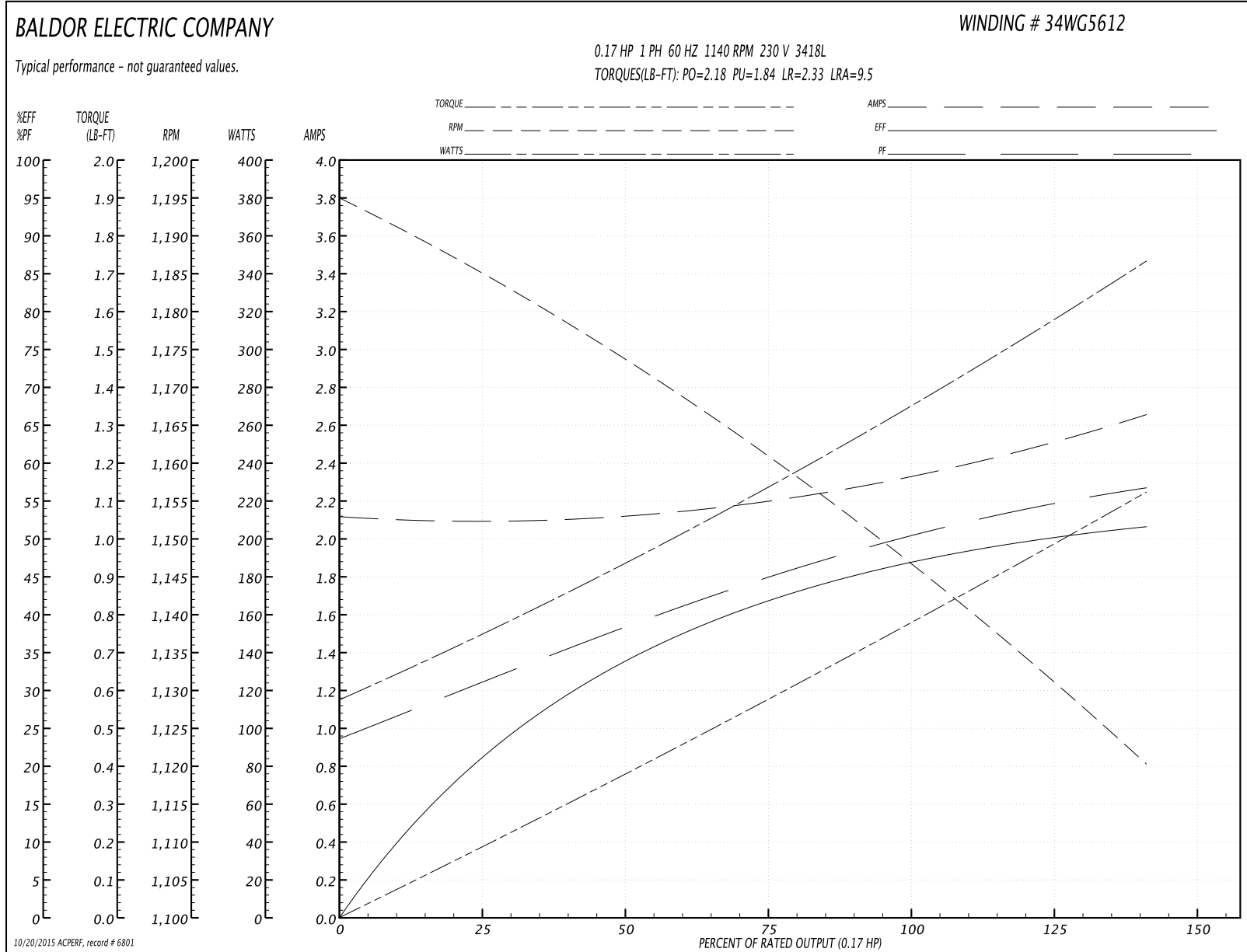
| | | |
|-------------------------------|--------------------|------------------------|
| Winding: 34WG5612-R001 | Type: 3418L | Enclosure: TEFC |
|-------------------------------|--------------------|------------------------|

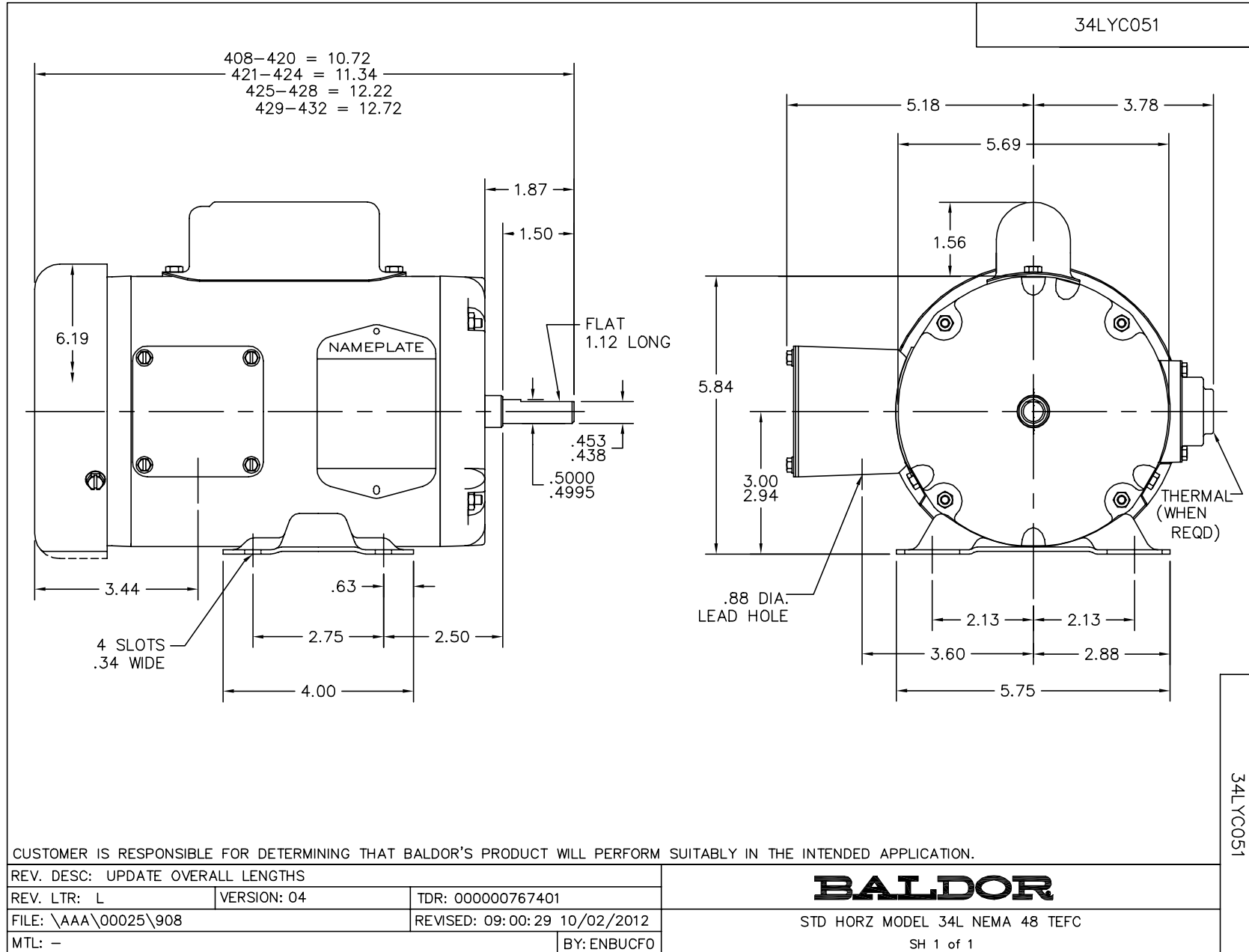
| Nameplate Data | | | | 230 V, 60 Hz: High Voltage Connection | |
|-----------------------|--------------|--------------|----|--|----------------------------|
| Rated Output (HP) | .17 | | | Full Load Torque | 0.75 LB-FT |
| Volts | 115/230 | | | Start Configuration | direct on line |
| Full Load Amps | 4.6/2.3 | | | Breakdown Torque | 2.18 LB-FT |
| R.P.M. | 1140 | | | Pull-up Torque | 1.84 LB-FT |
| Hz | 60 | Phase | 1 | Locked-rotor Torque | 2.33 LB-FT |
| NEMA Design Code | N | KVA Code | P | Starting Current | 9.5 A |
| Service Factor (S.F.) | 1.35 | | | No-load Current | 2.1 A |
| NEMA Nom. Eff. | 47 | Power Factor | 52 | Line-line Res. @ 25°C | 11.6 Ω A Ph 10.4 Ω B Ph |
| Rating - Duty | 40C AMB-CONT | | | Temp. Rise @ Rated Load | 55°C |
| S.F. Amps | 5/2.5 | | | Temp. Rise @ S.F. Load | 62°C |

Load Characteristics 230 V, 60 Hz, 0.17 HP

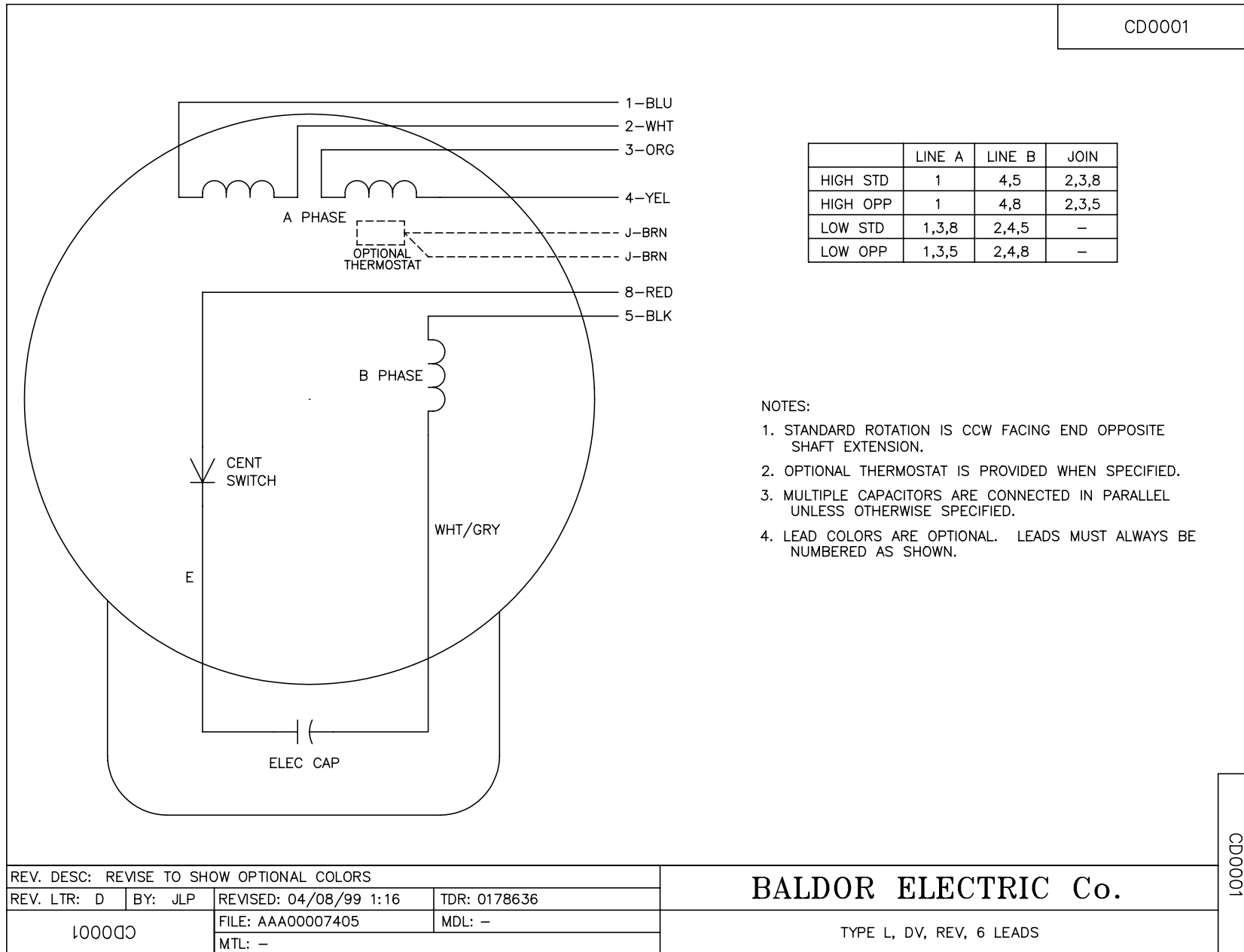
| % of Rated Load | 25 | 50 | 75 | 100 | 125 | 150 | S.F. |
|-----------------|------|------|------|------|------|------|------|
| Power Factor | 31 | 39 | 45 | 52 | 58 | 64 | 62 |
| Efficiency | 19 | 34 | 42 | 47 | 50 | 51 | 50.5 |
| Speed | 1185 | 1175 | 1160 | 1150 | 1135 | 1120 | 1125 |
| Line amperes | 2.1 | 2.15 | 2.2 | 2.3 | 2.4 | 2.7 | 2.5 |

Performance Graph at 230V, 60Hz, 0.17HP Typical performance - Not guaranteed values





CD0001



NOTES:

1. STANDARD ROTATION IS CCW FACING END OPPOSITE SHAFT EXTENSION.
2. OPTIONAL THERMOSTAT IS PROVIDED WHEN SPECIFIED.
3. MULTIPLE CAPACITORS ARE CONNECTED IN PARALLEL UNLESS OTHERWISE SPECIFIED.
4. LEAD COLORS ARE OPTIONAL. LEADS MUST ALWAYS BE NUMBERED AS SHOWN.

CD0001

| | | | |
|---|---------|------------------------|--------------|
| REV. DESC: REVISE TO SHOW OPTIONAL COLORS | | | |
| REV. LTR: D | BY: JLP | REVISED: 04/08/99 1:16 | TDR: 0178636 |
| 100000 | | FILE: AAA00007405 | MDL: - |
| | | MTL: - | |

BALDOR ELECTRIC Co.

TYPE L, DV, REV, 6 LEADS